



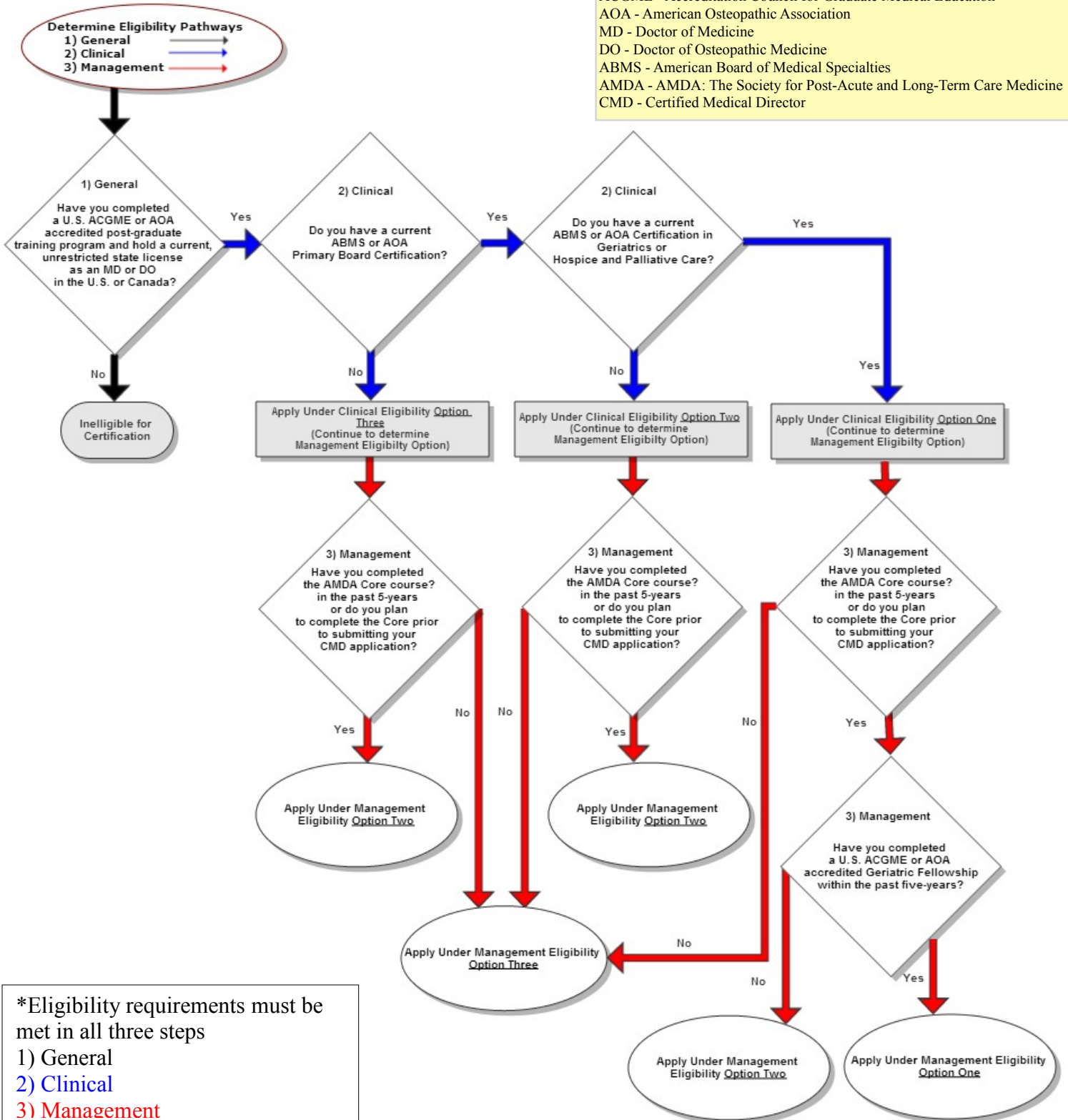
ABPLM

American Board of Post-Acute and Long-Term Care Medicine, Inc.

Certified Medical Director Initial Certification Eligibility Pathways*

Abbreviation Guide:

ACGME - Accreditation Council for Graduate Medical Education
 AOA - American Osteopathic Association
 MD - Doctor of Medicine
 DO - Doctor of Osteopathic Medicine
 ABMS - American Board of Medical Specialties
 AMDA - AMDA: The Society for Post-Acute and Long-Term Care Medicine
 CMD - Certified Medical Director



*Eligibility requirements must be met in all three steps

- 1) General
- 2) Clinical
- 3) Management