



Education ◆ Quality Patient Care ◆ Networking

Promoting quality patient care through medical leadership and education

www.caltcmm.org (888) 332-3299 info@caltcmm.org

1



Ways to Support CALTCM:

- Membership
- Volunteer
- Encourage Sponsorships & Donations

Non-Profit Status: The California Association of Long Term Care Medicine (CALTCM) is currently exempt under section 501(c)(3) of the Internal Revenue Code. Contributions or charitable donations made to our non-profit organization are tax-deductible under section 170 of the Code. Contact CALTCM with questions at: info@caltcmm.org or (888) 332-3299

[This Photo by Unknown Author is licensed under CC BY](#)

2

In-Person



LMG 24th ANNUAL CONFERENCE
Leadership & Management in Geriatrics

Earn up to 16.0 hours of CME, CMD management, ABIM MOC

Unlock Your Leadership Potential & Lead the Future of Geriatrics with CALTCM

The Leadership & Management in Geriatrics (LMG) course is designed for healthcare professionals who are serious about elevating care for older adults—and ready to elevate themselves in the process.

Whether you're a seasoned medical director, an emerging leader, or a clinician stepping into greater responsibility, LMG offers practical tools, real-world strategies, and hands-on application tailored specifically to the complexities of geriatrics.

This isn't abstract leadership theory. It's leadership for the realities of PALTC.

June 12 - 13, 2026
Omni La Costa, Carlsbad, CA



www.caltcm.org




3

On-Demand Program



California MEDICAL DIRECTOR PROGRAM



California's progressive and often stricter regulations shape nursing home care and your role as a medical director. This program will help you understand what sets California apart, stay current with regulations, and anticipate upcoming changes that could impact your daily work.

- CA Regulations**
California law requires Medical Directors to be certified by January 1, 2027.
- Continuing Education**
Earn valuable CME and CMD hours needed for your journey to becoming a certified medical director (CMD).

REGISTER NOW

Contact Us info@caltcm.org




4



2026 CALTCM
Summit for Excellence
September 24-26, 2026
Paradise Point, San Diego, CA



In-Person



- Brings together clinicians, administrators, policymakers, and industry experts dedicated to advancing care for older adults.
- Designed for the entire PALTC interdisciplinary team and administrative leadership.
- Features cutting-edge education, practical insights, and streamlined accreditation opportunities.
- Focuses on California-specific issues, trends, regulations, and innovations impacting PALTC care delivery.
- Provides a dynamic, engaging, and experiential learning environment that supports collaboration, leadership, and professional growth.

Target Audience: Physicians, advanced practice nurses, gero-psychiatrists, pharmacists, licensed nurses, administrators, and other members of the interdisciplinary team who care for patients and residents in PALTC.

5





CALTCM
California Association of Long Term Care Medicine

CALTCM 2026

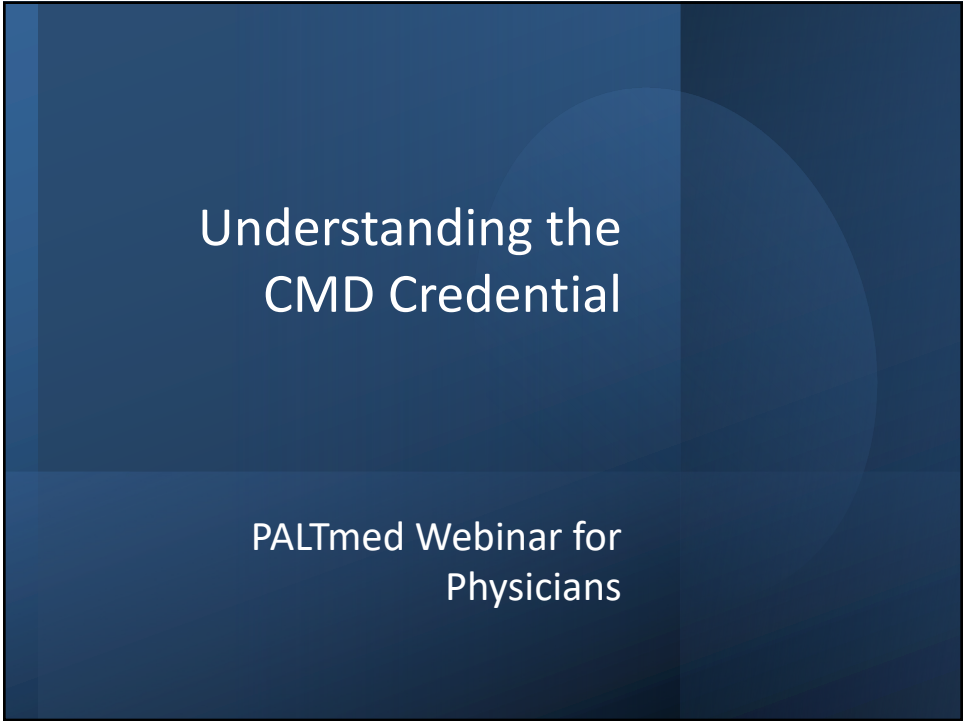
Webinar Series

4th Wednesday of Each Month
12:00 – 1:00 pm
CME available to members.

Free Webinar Series

Promoting quality patient care through medical leadership and education

6



1



2

What is the CMD Credential?

The Certified Medical Director (CMD) credential recognizes expertise in post-acute and long-term care medicine

Demonstrates leadership, regulatory, and quality improvement knowledge

Supports professional credibility and career advancement

Aligns physicians with best practices in PALTC settings

3

Why Pursue the CMD Credential?

Enhance	Enhance leadership and operational knowledge
Strengthen	Strengthen regulatory and compliance understanding
Demonstrate	Demonstrate commitment to quality patient care
Build	Build credibility with organizations, peers, and surveyors
Support	Support professional growth in PALTC medicine

4

CMD Eligibility Overview

- Physician must hold an active, unrestricted medical license
- Experience in post-acute and long-term care settings is encouraged
- Completion of required CMD Core Curriculum & Core Synthesis
- Submission of application and supporting documentation through the certification portal

5

STEP 1: Eligibility

To be eligible for the CMD Certification you must have:

- Completion of a U.S. ACGME or AOA accredited post-graduate training program (or a Canadian Royal College of Physicians and Surgeons or College of Family Physicians accredited post-graduate training program).
- Or -
Completion of relevant U.S. post-graduate training and successful attainment of U.S. state licensure to practice medicine.*
- Current, unrestricted state license in good standing as an MD or DO in the U.S. (or Canadian equivalent medical license).
- Current DEA license in good standing.
- Consent to background check (FACIS level 3).
- Spend a minimum of 8 hours each month in service as a current medical director/associate medical director in a post-acute and long-term care (PALTIC) setting.
- Completed at least 1 year of experience as a clinician in PALTIC, or completion of a geriatric fellowship, within the past five years.

Note: recertification is required every six years.

6

STEP 2: Application

Once you have reviewed the eligibility requirements and determined you met them, log into the **CMD Certification Portal** to complete the CMD eligibility checklist and application.

7

STEP 3: Complete Core Curriculum

The body of knowledge required for certification is found in the Core Curriculum on Medical Direction in PALTC (the Core). The Core is divided into two parts, each of which is required:

Curriculum Breakdown:

- Part 1: Online Core Curriculum on Medical Direction
 - Self-paced online course of 30 modules, access is available once fee is paid to access the course.
- Part 2: Core Synthesis
 - A live, virtual event that includes small group discussion with Core faculty and peers

8

**STEP 4:
CME/CMD
Requirements**

Option 1: Current ABMS or AOA board certification in a primary specialty

- In addition to the Core Curriculum, 14 CMD management credits plus 60 clinical CME credits in the field of geriatrics/long-term care from within the past three years.

Option 2: Current ABMS or AOA board certification in a primary specialty *with ABMS/AOA secondary specialty in geriatrics*

- 14 CMD management credits plus 0 clinical CME credits are required beyond the Core Curriculum.

Option 3: Without active board certification in a primary specialty

- At least two years of clinical practice in post-acute and long-term care within the past five (5) years

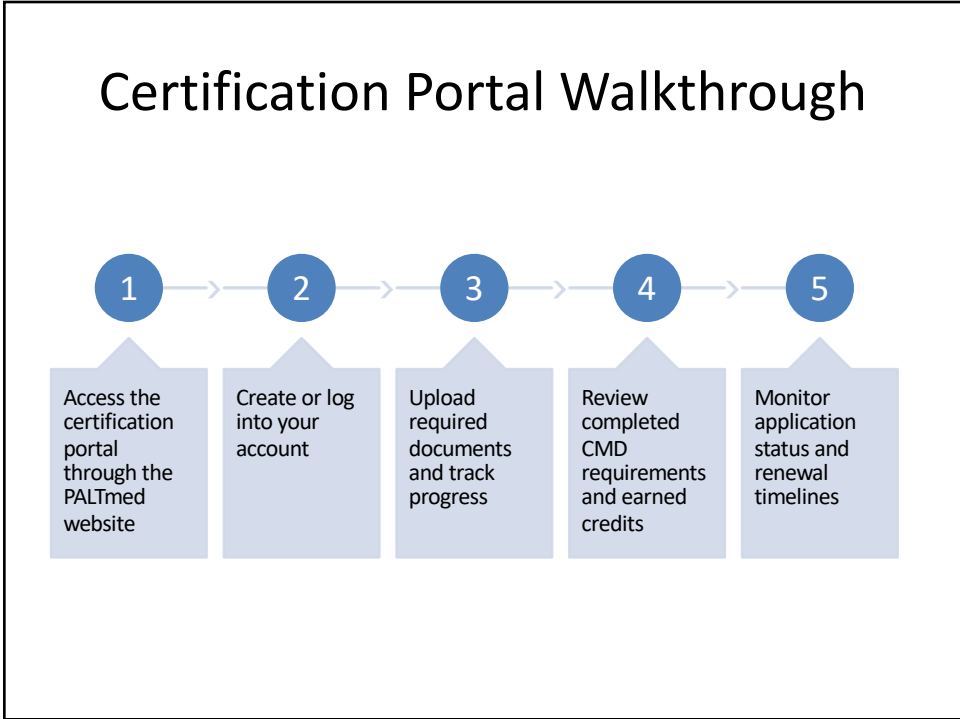
AND

- In addition to the Core Curriculum, 14 CMD management credits plus 75 clinical CME credits in the field of geriatrics/long-term care

Option 4: If geriatric fellowship has been completed within the past 5 years:

- No additional CME/CMD management credits are needed beyond the Core Curriculum.

9



10

Management vs. Clinical CME

Management CME

Focused on leadership, operations, compliance, and regulations

Supports administrative and medical director competencies

Examples: Quality improvement, survey readiness, staffing, risk management

Clinical CME

Focused on direct patient care and clinical decision-making

Supports diagnosis, treatment, and evidence-based care

Examples: Dementia care, infection prevention, medication management

11

STEP 5: CMD Certification

Upon successful completion of steps 1–4 and clearance of the FACIS Level 3 background check, your CMD credential will be awarded, and your certificate will be emailed.

12

Navigate to the CMD section on the PALTmed website on Paltmed.org

Certified Medical Director (CMD)

Your dedication and passion deserve to be recognized, and the Certified Medical Director (CMD) credential is the perfect way to showcase your remarkable achievements as a medical director. Embrace this exciting path and let your career soar to new heights.

```
graph LR; S[STEPS] --- 1((1)); 1 --- E[Eligibility]; E --> 2((2)); 2 --- A[Application]; A --> 3((3)); 3 --- CC[Complete Core Curriculum]; CC --> 4((4)); 4 --- CR[Complete Required CME/CMD Requirements]; CR --> 5((5)); 5 --- C[Certification];
```

Select “Get Started”, then “Complete CMD Application”

Website Walkthrough

13

After selecting “Complete CMD Application”

Cloud Generation

Log In

Using your Microsoft or HigherLogic account(s).

Log in using Microsoft

Log in using PALTmed

By continuing you are agreeing to the [Cloud Generation Terms of Service](#) and [Privacy Policy](#)

Website Walkthrough

14

Using PALTlearn for CMD & CME Credits

The screenshot displays the PALTlearn website. At the top, there is a navigation bar with links for Forum, Career Center, Cart, and Log In, along with a search bar. Below this, the main content area features a 'Browse' section with dropdown menus for Popular Topics, Programs, and Credit Type. A 'Search This Site' section allows filtering by Category (ANY), Type (ANY), and Content Type (ALL SELECTED (2)). A central banner for 'PALTEssentials' titled 'NAVIGATING CLINICAL PRACTICE' includes a 'NEW COURSE' badge and an image of a doctor. Below the banner are two prominent buttons: 'Self-Paced Courses' (with a laptop icon) and 'Live Symposiums' (with a group of people icon).

15

Core Synthesis Update

The infographic consists of four columns, each with an icon and a text box. From left to right: 1. An icon of two interlocking gears above the text 'The 2026 Core Synthesis program is currently full'. 2. A checkmark icon above the text 'February 2027 sessions still have availability'. 3. A stethoscope icon above the text 'Physicians who have already started their CMD pursuit may request a letter documenting active pursuit status'. 4. An icon of a head with gears inside above the text 'Encourage early registration for future Core Synthesis opportunities'.

16

Tips for a Successful CMD Journey

- 01**
Start tracking CME and CMD requirements early
- 02**
Use PALTlearn consistently throughout the process
- 03**
Keep documentation organized and updated
- 04**
Review portal progress regularly
- 05**
Reach out to PALTmed staff with questions or support needs

17

Questions & Resources



Visit the PALTmed CMD webpage for additional resources



Explore PALTlearn for educational offerings



Contact PALTmed staff for application and eligibility assistance



Thank you for your commitment to excellence in PALTC medicine

18